

OWNER'S GUIDE

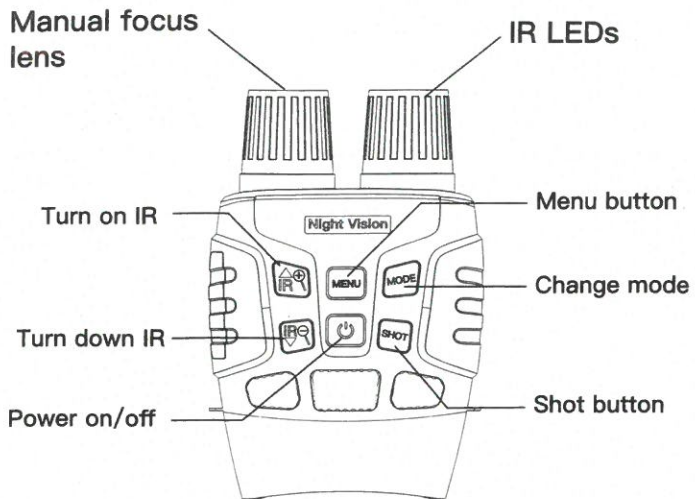
Digital Night Vision Goggles

JStoon@outlook.com

DIRECTORY

Product Overview	02
Battery Installation	03
Inserting Memory Card	04
Turn on the device	04
Photo Mode	05
Video Mode	05
Focusing the image	06
Digital zoom	07
Turn on IR	09
Shoot	09
Playback video/photo	10
Delete Items	10
Lock/unlock items	11
Change video/photo resolution	11
Change Night vision sensitivity	12
Change power frequency	12
Automatic shutdown time	13
Change Date/Time	13
Close time and date display	14
Change the menu language	14
Format memory card	15
Reset device	15
Install a tripod	16
Connecting to the PC through USB cable	16
Precautions	16
How far is night vision observation distance?	17

Product Overview



TFT LCD VIEW SCREEN

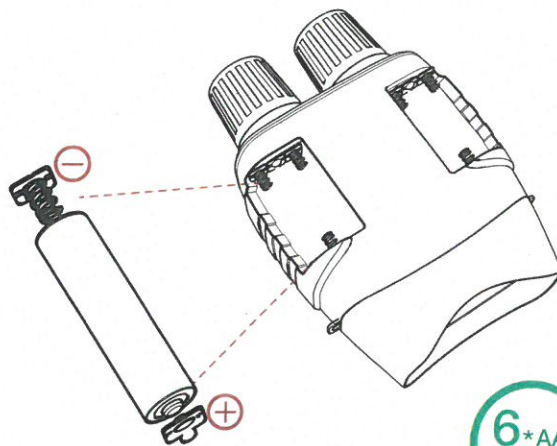
Battery Installation

1. Open the battery cover, install 6 * 1.5V Alkaline batteries into the battery slot, and make sure the battery polarity is installed correctly.

The detailed installation method can follow the battery card.

Tips: The battery specifications should meet the requirements and have sufficient power.

2. Close the battery cover



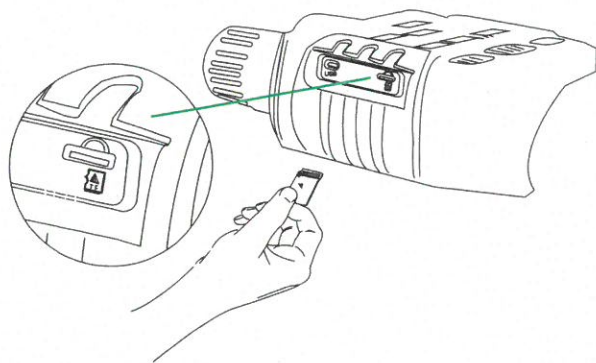
Inserting Memory Card

1.Insert the Micro Memory card into the slot before use.
Make sure the direction is right.

2.Remove the installed memory card, press the edge of the memory card in gently, and it will come out.

Tips: Storage capacity between 4GB and 32GB is recommended.

Note: The device will show "No Card" if the memory card is not installed properly.



Turn on the device

Power On Press the power button for about 3 seconds to start the night vision device.

Photo Mode

Turn on the device, if not in photo mode, please press [MODE] button to switch to photo mode.



Video Mode

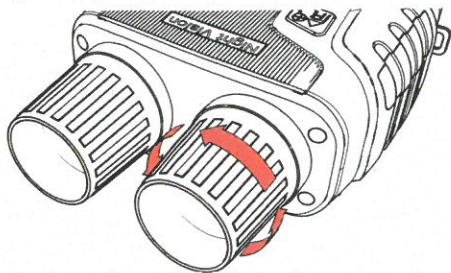
Taking a video the default is video mode. If not, press the [MODE] button to select video mode.



Focusing the image

On the left lens, marked “far” and “near”. If the observation distance is far, please rotate the lens to left. If the distance is near, rotate the lens to right. Users can repeatedly adjust the optimal focal length according to the actual observation distance.

When you track the target is blurry, it means that you need to adjust the objective focusing handwheel, and repeatedly debug until you get a clear image.



Digital zoom

In the photo/video mode, press and hold the \mathcal{Q} or \mathcal{Q} button for 3 seconds to turn on the zoom, the maximum support 4x zoom



Zoom off



Zoom on

Turn on IR

In photo/video mode, if you have to view the darkness environment, please short press IR UP button to activate the IR LEDs, the image will change to black and white. The IR LEDs have seven levels, short press IR UP button to up the level, short press IR DOWN button to down the level. (If the battery voltage is not enough, the IR LEDs level will down automatically. IR level can up to 7 level when the battery power is full. If only left half power, the level just can up to 5. If only left 25% power, the level just can up to 3. If the battery power is lower than 25%, IR LEDs can not be activated.)

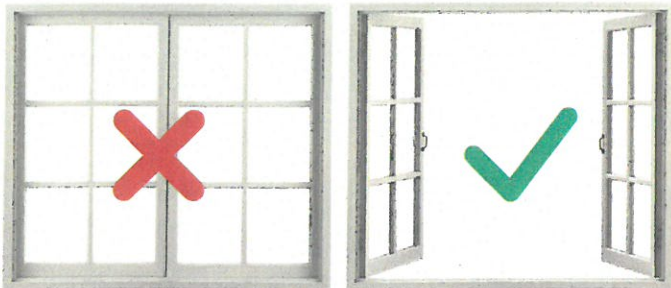


IR off



IR on

NOTE: Whether or not the infrared light is turned on, the device cannot observe objects through glass.



Depend on →



Shoot

The lens is aimed at the target and observed through the screen. Press the [SHOT] button to start recording, and the recording duration will be displayed on the screen. During shooting, the video recording is automatically saved in the memory card.

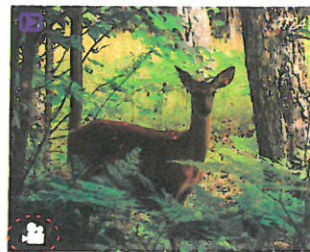
Note: When the memory capacity is full, the machine will automatically stop recording.

Playback video/photo

Watching Recorded Videos and Photos In the photo mode, press the [MODE] button to select the Playback mode. In playback mode, press the up or down button to turn pages forward and backward, the playback order is the shooting order.



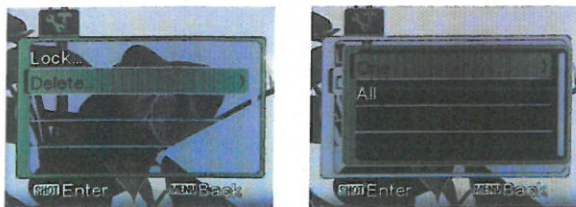
Photo



Video

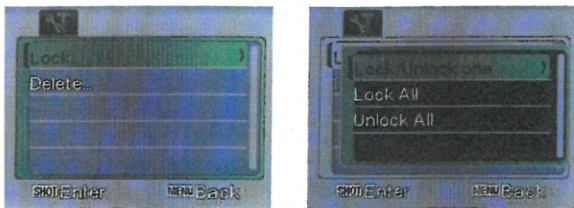
Delete Items

Delete Stored Videos and Photos In playback mode, press the [MENU] button to enter the “delete” option, select the delete option, and then select the content to be deleted.



Lock/unlock items

If you are worried about the photo or video being deleted by mistake, please use the lock function. In the return visit mode, select the photo/video to be locked, press [MODE] button to pop up the following menu, and then select the item you want to lock, when the item is locked on the left A key icon will appear, unlock as above.



Change video/photo resolution

In the photo/video mode, press [MENU] to enter the menu, and then select the item you want to change, photo options:[1M 1280X960] [VGA 640X480];video options:[960P 1280X960] [640P 640X480],After completing the change, the corresponding icon will be displayed in the shooting program.



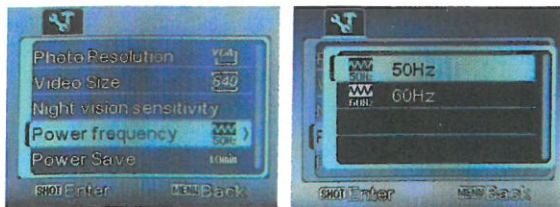
Change Night vision sensitivity

In the photo/video mode, press [MENU] to enter the menu, Use the Δ or ∇ button to select up and down,and then select the item you want to change,options:Low/Middle/High.



Change power frequency

In the photo/video mode, press [MENU] to enter the menu, Use the \uparrow or \downarrow button to select up and down, and then select the item you want to change, options: 50Hz/60Hz



Automatic shutdown time

To save battery usage, you can set the device's automatic shutdown time. In the photo/video mode, press [MENU] to enter the menu, Use the \uparrow or \downarrow button to select up and down, and then select the item you want to change, options: 3min / 5min / 10min / OFF.



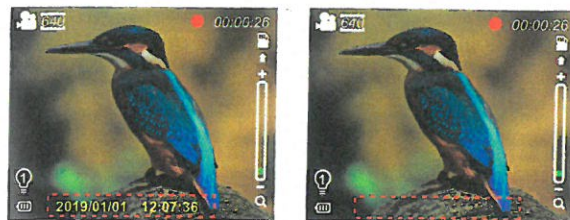
Change Date/Time

In the photo/video mode, press [MENU] to enter the menu, Use the \uparrow or \downarrow button to adjust the value, use [MODE] button to select the item to be adjusted. You can also change how the time is displayed.



Close time and date display

If you don't want the time displayed in the video/photo, you can turn off the time display. In the photo/video mode, press [MENU] to enter the menu, Use the \uparrow or \downarrow button to select up and down, and then select the item you want to change. options: off/ date/ date&time.



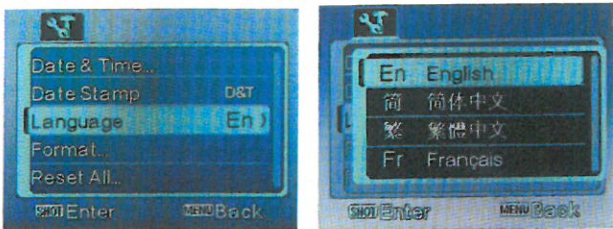
Date & time

Off

Change the menu language

In the photo/video mode, press [MENU] to enter the menu, Use the \uparrow or \downarrow button to select up and down, and then select the item you want to change,

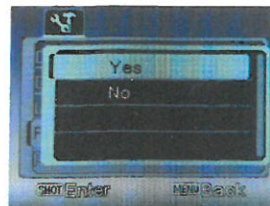
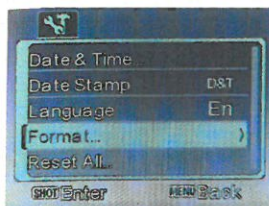
Options:[English]/[Simplified Chinese]/[Traditional Chinese]
/[French]/[Dutch]/[Spanish]/[Italian]/[Portuguese]/[German]
/[Russian]/[Japanese]/[Korean].



Format memory card

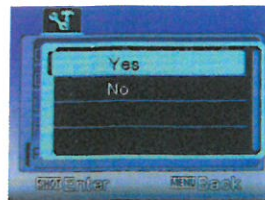
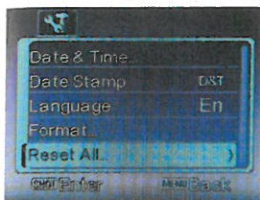
If you want to clear the data on the memory card, you can solve it by formatting. In the photo/video mode, press [MENU] to enter the menu, Use the \uparrow or \downarrow button to select up and down, Press the shot button to confirm.

NOTE: All data will be lost after formatting, please pay attention to backup!



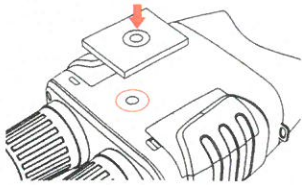
Reset device

Restoring factory settings will delete all previous user settings. In the photo/video mode, press [MENU] to enter the menu, Use the \uparrow or \downarrow button to select up and down, - Press the shot button to confirm.



Install a tripod

This product can be installed on a tripod, first install 1/4 "Screw Quick Release Plate to the bottom of the product, Then lock the product to the tripod.



Connecting to the PC through USB cable

1. Turn on the night vision. Connect it to a computer through the supplied USB cable.
2. When connecting to the computer, it will appear "MSDC" on the screen.
3. Open [My Computer] or [Windows Explorer]. A "Removable Disk" appears in the drive list. Double-click

Precautions

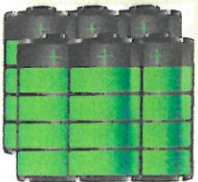
- 1: Alkaline batteries need to be installed before use, preferably a brand new alkaline battery. If the battery power is low, it may not be able to turn on.
- 2: Need to install memory card in advance to take pictures and record videos.
- 3: Do not throw it into water for soaking, it will damage the device.
4. Because the observation distance is far, the sound cannot be transmitted.

How far is night vision observation distance?

The observation distance varies according to the size of the target.

Product	Owl Night Vision Binoculars
Example Reference	Observation distance
Houses	About 300 meters
People	About 150 meters
Hare	About 30 meters

Only Powered by 6 x 1.5V AA batteries



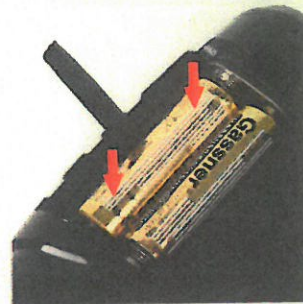
《IMPORTANT》Please use the correct way to install the battery, otherwise it will easily lead to failure to boot.



Step 1
Open the battery cover



Step 2
pull the wire out



Step 3
Place AA battery on the wire



Step 4
Close battery cover