

Ipswich Public Library

25 North Main Street, Ipswich, Massachusetts 01938

the Newsletter

MARY LOU MURPHY RETIRES

Mary Lou Murphy, Senior Library Technician—Circulation, will retire on June 30th.

Mary Lou is the face of the library for most patrons. Virtually all of her time at the library (she has worked here for over 27 years!) has been spent helping patrons at the Circulation Desk. Before coming to work at the library Mary Lou worked for the Ipswich Public School system. Between her very visible job at the library and her years of volunteer work for the Ipswich Humane Society, Mary Lou knows just about everyone in town—by name.



Unfailingly helpful and pleasant, she is also the institutional memory of the library. She is thoroughly familiar with all the materials in the Archives. She is the one we consult about any particularly difficult question concerning Ipswich history. Most of the time Mary Lou knows exactly which book will contain the information about the particular fact/date/person in question. Mary Lou was named the very first “Employee of the Year” for the Town of Ipswich. We are very happy to report that Mary Lou will not leave us entirely. She plans to volunteer at the library often. Hurrah!

Best wishes, Mary Lou!

Heard Portrait to Hang in Rogers Room

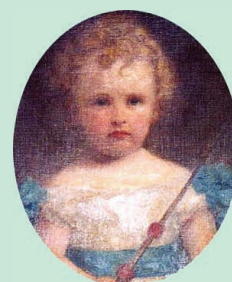
The honored guest at the April tea celebrating the 135th anniversary of the founding of the Ipswich Public Library was founder Augustine Heard’s great, great niece, Mrs. John Chamberlain (Maryleeds Heard). Shortly after the tea Mrs. Chamberlain contacted the library about the possibility of donating a family portrait. This charming portrait of a little boy (George Heard) was painted by Richard M. Staigg in 1875. It was probably painted after his death at 1 year 10 months. In the style of the period, George is wearing a white dress decorated with bright blue bows and sash. He is shown with a riding stick in one hand and the tether of a toy horse in the other. George’s father, John Heard (1824-1894), was a nephew and business partner of Augustine Heard. According to family records John Heard was appointed consul to China by the Russian and Portuguese governments in 1861.

The Trustees were delighted to accept this donation. After cleaning and reframing the portrait will hang in the Rogers Room, which was built as a children’s room in 1941. Also hanging in the Roger’s Room is the portrait of *Eunice Cowles* painted by George’s surviving sister, Alice Leeds “Elsie” Heard, the last member of the Heard family to reside in the Heard Mansion on the South Green.

Spring 2004
Volume 6
Issue 1

Inside this issue:

<i>Mary Lou Murphy Retires</i>	1
<i>New Heard Portrait</i>	1
<i>ALA Observations on Libraries</i>	2
<i>Susanne Simmons to Head Circulation</i>	2
<i>New Databases Coming in July</i>	3
<i>Magazine Collection</i>	3
<i>Plan of Service</i>	4
<i>Children’s Room News</i>	4
<i>Museum Co-Payments</i>	4



George Heard

Observations on Libraries in the United States by the Executive Director of the American Library Association

At the annual conference of the Massachusetts Library Association in May I heard Keith Fields (Executive Director of the American Library Association) speak about the challenges faced by libraries in America at the beginning of the twenty-first century. He outlined 5 areas of concern:

- ❖ Funding for libraries
- ❖ Continuing to attract the best and the brightest to the library profession
- ❖ Low salaries of librarians
- ❖ What (should) libraries do to serve society?
- ❖ Will libraries survive?

In Massachusetts the erosion of state aid to libraries is a major problem, as we can see from the threat to close neighboring public libraries in Haverhill, Winthrop and Saugus. Mr. Fields pointed out that libraries need to exploit their role in education: "How can you say you support education and not libraries?" he asked. On the issue of attracting new talent to the library profession he stressed the need for more training at every level. In Ipswich we have taken advantage of the training opportunities offered by our regional system (NMRLS) and our automation consortium (MVLC). Staff members routinely attend workshops and training sessions, especially on automation issues and new computer software. The salary issue is a concern in Ipswich. The compensation for the professional librarians on the staff, for example, is still below the starting level salary recommended by the Massachusetts Library Association. Mr. Fields addressed issues such as First Amendment rights and keeping access to information free to the public as key areas where libraries serve the general society. Some people predicted the decline of libraries in the face of the Internet. Mr. Fields said: "Don't believe them..." In Ipswich we have almost constant use of our Internet-connected machines. In a typical month over 1000 patrons will sign up for half-hour slots. We have also seen a tremendous increase in the number of books and other materials requested by our patrons from other libraries. This phenomenon is the direct result of access to the catalogs of the MVLC libraries on-line. People also come to the local library for a sense of community and social interaction, according to Mr. Fields. We see this all the time at the Ipswich Public Library, during story hours for children, book club meetings, and socials, such as the tea in April. The national trends outlined by Keith Fields are reflected in Ipswich to a surprising degree.

Victor Dyer
Library Director

A Familiar Face With a New Hat

The library is very pleased to announce that Susanne Simmons has been appointed Senior Library Technician upon the retirement of Mary Lou Murphy. Susanne has worked at the Main Circulation Desk for over five years. She is excited and happy to be taking on the challenge of managing all desk operations.



New Databases Available in July



As of July 1, 2004, Ipswich Public Library patrons will have access to two new databases: History Reference Center from EBSCO and The New Book of Popular Science from Grolier. These new additions, as well as the current databases, can be used either at the library or at home. Just go to the library's website (www.town.ipswich.ma.us/library), click on "Reference" then "Online Databases". You will see a list of the available databases on this page and can enter any you select. If a database asks for a password, enter all the digits on the back of your library card.

History Reference Center is the world's most comprehensive full text history reference database designed for secondary schools, public libraries, junior/community colleges, and undergraduate research. The database features full text for nearly 500 historical encyclopedias and other history reference books, including award winning titles from many top publishers, such as Chelsea House, Houghton Mifflin, and Oxford University Press. The database also includes full text for more than 50 leading history periodicals, including *American Heritage*, *American Historical Review*, *Civil War Times Illustrated*, *History Today*, *Natural History*, and many more. The database also contains 58,000 historical documents, 43,000 biographies of historical figures, and more than 12,000 historical photos and maps.

The New Book of Popular Science is completely ADA-compliant, giving equal access to persons with disabilities. The SciClopedia features 400 articles on science, technology and medical topics, with full-color photographs, detailed scientific artwork, terrestrial and celestial maps, careers in science, continually updated bibliographies, and over 3,000 links to relevant Web sites. Other sections of the database contain the top science stories each week, science projects, biographies of over 2,000 scientists, tables and charts, a guide to the night skies, and games and puzzles.

MAGAZINE COLLECTION

Popular magazines *borrowed* by our patrons:

- AMERICAN ARTIST
- ARCHITECTURAL DIGEST
- ARCHITECTURAL RECORD
- BON APETIT
- BOSTON MAGAZINE
- COOKING LIGHT
- DOWN EAST
- HOUSE BEAUTIFUL
- MARTHA STEWART LIVING
- NEW YORKER
- NEWSWEEK
- PEOPLE WEEKLY
- TIME

Popular magazines *read in the Library*:

- ANTIQUES
- ARCHITECTURAL DIGEST
- ARCHITECTURAL RECORD
- BOSTON MAGAZINE
- EARLY AMERICAN LIFE
- ECONOMIST
- GOURMET
- HOUSE BEAUTIFUL
- MARTHA STEWART LIVING
- MEN'S HEALTH
- NEW YORKER
- TIME
- TOWN AND COUNTRY

The Ipswich Public Library is currently evaluating its magazine collection. Titles with low circulation will be dropped from subscription and will be replaced with new ones effective January 2005. If you wish the Library to consider acquiring a new magazine, please fill out a form at the main desk.

Friends Donate New Urns

The Friends of the Ipswich Public Library have donated two, new cast iron urns to replace the concrete urns that had begun to deteriorate. Mim Frost, head of the Trustees' Landscape Committee, selected the new urns last fall at Corliss Bros. Filled this season with Violas, they stand guard on either side of the brick path beneath the lantern on the front of the library. The classical design of the urns complements the library's 'temple' architecture.



A Few Highlights from the Plan

Trustees will launch an endowment campaign

Funding sources will be investigated to allow expanded weekend hours of service

Library staff will construct a database of information about local organizations

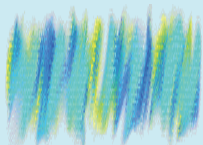
Library will sponsor a 'Community Reads' program where everyone is encouraged to read and discuss one book

Library staff will work with school system so that all Sixth grade students will enjoy an introduction to the library

Training sessions on specialized databases will be offered

Newspaper collection will be expanded

Library will create a new genealogical section on the library's website



New *Plan of Service* Approved by Massachusetts Board of Library Commissioners

With input from staff, Trustees, a committee of citizens and the public, a new *Plan of Service 2004-2008* was inaugurated this spring. In order to qualify for state grants public libraries must have on a plan of service that meets certain criteria, including multi-year goals and objectives, a mission statement and an assessment of user needs. In September 2003 we gathered together a committee of citizens, with staff and Trustee representatives, to discuss the library's strengths and weaknesses, as well as opportunities and threats that present themselves to the community. With this exercise the process of planning the future of the library began. The Committee was supplied with extensive background information about the library and the community before the first meeting. Additional information and suggestions were solicited from

the public through a survey that was distributed in the *Ipswich Chronicle* in October. This survey was also available online on the library's website (www.town.ipswich.ma.us/library). In December the Committee selected five areas of concentration for library services and programs over the next four years: Library as a Gathering Place (Commons), Support for Formal Learning, Basic Literacy, Support for Lifelong Learning and Local History and Genealogy. The staff then spent the month of December fitting specific goals, objectives and activities to the selected service responses. In January 2004 the Board of Trustees approved the final planning document, which was printed and distributed in a 34-page booklet. Copies are available at the library.

The Children's Room

"Explore Other Worlds" is the theme of the Massachusetts Regional Library Summer Reading Program for 2004. This program will begin at the Ipswich Public Library on June 25, 2004.

"Explore Other Worlds" is for children from pre-school age through the sixth grade with appropriate activities for each age group. The program will show children the magic of exploration in the many worlds in which we live; the sea world, the space world, the circus world, the magical world and other places they might like to visit. All of this travel will be done through the magic of reading!

The summer festivities begin with a special performance by Rick Goldin and his puppets on June 25 at 12:30 P.M. at the Senior Citizen's Center at Town Hall.

On July 30 at 10:30 A.M. Michelle's Menagerie will appear at the Library with live animals of the rain forest. Children 4 and older must register for this event (call 978.356.6648). Our annual Family Summer Cookout will follow this program! All are invited to enjoy the hot dogs, the music, and the balloons. Concluding our summer program will be "Sparky Puppets". This event will take place on August 19 at 10:00 A.M. at the Library.

A calendar listing all events and activities, including Evening Storytimes, Craft Days and the Poetry Writing Workshop will be available at the Children's Room at the Library.

Museum Co-Payment

Two museums in New England will institute co-payment for general admission for each visitor holding a Library Pass effective July 1, 2004.

Museum of Fine Arts	\$5.00 per person co-payment
Children's Museum of Portsmouth	\$2.00 per person co-payment

Please make a note of these changes. For questions, please call the Library at 978.356.6648