

Ipswich Public Library

25 North Main Street, Ipswich, Massachusetts 01938

the Newsletter

New Web Site Offers Library Service 24/7

The Ipswich Public Library recently launched its new web site at www.town.ipswich.ma.us/library. The web site is designed for easy access for library patrons, either from home or office, every time they need information. Content is organized and color coded according to functions. The library logo is consistently used throughout the web site in a colorful “beach glass” look. The Library’s goal is to maintain a web site that is attractive and useful.

The home page enables the patron to choose from the varied services currently offered by the Library - Reference, Children’s Services, Youth Services, Archives as well as the interactive use of the online catalog. By clicking on the Library Information page, one will find the library’s hours of operation, the process of obtaining a library card, loan periods and other general information useful not only to our regular patrons but also to new residents of Ipswich. Latest news, governance and policies, Friends of the Library and special events are just a click away. The Reference page offers portals to online databases such as EBSCOhost and the specialized databases provided by the Northeast Massachusetts Regional Library System: InfoTrac, Dialog@Carl, Electric Library, and many other full text databases (see article on page 2). These databases are available for remote-access by patrons with active library cards. The Reference page also offers an array of

“Internet Search Tools” and an opportunity for patrons to e-mail reference questions directly to the Reference Librarian. The schedule for Internet classes with the Reference Librarian is also posted on this page. Parents will be able to look up the calendar of activities, upcoming events, and story times on the Children’s

**www.
town.
ipswich.
ma.us/
library**

Services page while the Youth Services page provides a glimpse of the Homework Center and its resources. Valuable information resources concerning town history and genealogy are presented in the Archives section. Links in the Collections page connect users to lists of new materials owned by the Ipswich Public Library with continuous updates. Also on the Collections page is a brochure that offers a “guided tour” of the Library’s art collections.

The Catalog page is created to support almost all borrowing functions for the end users – renewals, placing online holds, viewing patron’s records. Also included are step-by-step instructions on the use of the online catalog. If one wishes to recommend a good title, a suggestion

form is provided.

Construction of the Ipswich Public Library web site required cooperation from numerous people: Greg Parachojuk, MIS Director of the Town of Ipswich, for technical support; Eric Graham, Technology Services Administrator of the Merrimack Library Consortium (MVLIC), for programming the varied specialized catalog functions; Susan Edwards of Extra Mile Design for graphic design. Financial assistance for this special project was made possible with Federal funds administered through the Massachusetts Board of Library Commissioners.

The depth, content, and improved navigational tools throughout the new web site indicate the commitment of the Library to serve the community twenty-four hours a day, every day of the week. The library staff encourages patrons to direct their browser to <http://www.town.ipswich.ma.us/library>.

Your feedback is always welcome!

Spring 2002
Volume 4
Issue 1

Inside this issue:

Reference Databases	2
E-mail Service	3
Digital Camera for Children’s Room	3
Comments on Web Site	3
Photography Display	4
Internet for Parents	4

Special
Technology
Issue

Reference Databases

FOR USE IN THE LIBRARY

- ◆ Sign up at the Main Desk to access the Internet and online databases
- ◆ Go into the Gaunt Reference Room and select an Internet workstation
- ◆ Select a database from the main menu
- ◆ Go to Ipswich Public Library's web site: www.town.ipswich.ma.us/library
- ◆ Select "Reference" then "Online Databases" then select a database
- ◆ Most of the databases require your patron ID #, which is on the back of your library card. Simply type in all of the numbers with no spaces

FOR USE AT HOME

The Ipswich Public Library currently has eleven online databases which you can use at the library or wherever you have Internet access. These services are free and can provide you with huge amounts of information that you would not otherwise be able to use. Most of these databases include simple instructions for use, but please ask Paula Grillo at the Reference Desk if you need help, or call 978.356.6648.

BRIEF DESCRIPTION OF DATABASES

EBSCOhost: Access to full-text articles in 1,840 periodicals through Master File Premier, plus specialized business, health, and education databases, an encyclopedia, a database with 154 U.S. and international newspapers (full-text), and Searchasaurus for primary grade students, which includes Primary Search with 70 children's magazines, a dictionary, pictures, and an encyclopedia of animals.

NoveList: (On the same button as EBSCO host) A database specializing in fiction for children, young adults and adults. A great way to find new books similar to ones you like!

Dialog@CARL: 250 databases in many subjects, including full-text of many newspapers.

Electric Library: For general reference purposes, access to many periodicals, books, pictures, maps, radio and television transcripts.

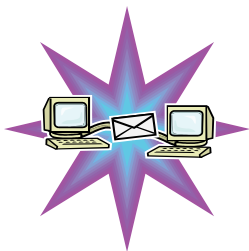
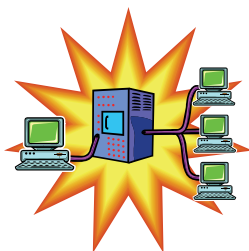
Grolier Online: Access to articles in *Encyclopedia Americana*, *Grolier Multimedia Encyclopedia* and *New Book of Knowledge* (Grade 3 and up).

!Informe!: Full-text Hispanic magazines and pamphlets on a variety of topics.

SIRS: SIRS Researcher is for adults and older students and contains selected articles from 1,200 publications and 100 maps. SIRS Discoverer is specifically for students, helps develop research, reading and other skills, and contains an encyclopedia and almanac.

INFOTRAC: Contains the following databases: Contemporary Authors, Contemporary Literary Criticism, General Reference Center, Expanded Academic ASAP (scholarly articles), Health Reference Center, General Business Files ASAP, One File (more than 3,000 full-text general and academic periodicals, plus indexing to another 3,000 titles, newspaper indexes and 89 international newswire services), and Predicasts PROMPT (research on companies from 1,000 business and trade journals).

Wilson Biographies Plus Illustrated: Contains 95,000 biographical articles and obituaries, with 26,000 photos.



DATABASES, from page 2

OCLC: Divided into two sections, OCLC WorldCat contains 46 million bibliographic records from libraries around the world, and OCLC NetFirst, a collection of Internet resources in all subject areas.

Massachusetts Special Collections Directory: A web-based database of the holdings of over 600 Massachusetts institutions, including academic, public and special libraries, town halls, museums, and historical societies.

**Ipswich Public Library
ANNOUNCES
e-mail notification
for requested materials**



We can now offer e-mail notification for your requested items as well as notification of overdue materials. You can find out about the books and other materials waiting for you in the library at your convenience on your home computer. To activate this service, please let us know your e-mail address.

*Please be aware that e-mail notification is **not** as confidential as the mails. If you share an e-mail address with other members of your household they will be able to read your e-mail notifications from the library.*

When children receive their 'upstairs' cards in the 8th grade, they may decide whether or not they want to use the family's e-mail address or begin using their own e-mail address if they have one.

Digital Camera for Children's Room

The Trustees recently approved the purchase of a digital camera for the Children's Room using St. John's Fund money (this fund was set up to improve services). The Library's Children's Room offers daily programs on a regular basis and special events during school vacation weeks and throughout the summer—thus giving us wonderful photo opportunities. We plan to post pictures on our Library web site as well as email them to the local newspapers for publicity.

Research on digital cameras convinced us that this is an excellent time to make this purchase. The technology has improved rapidly and the prices have come down dramatically.

Comments about the Library's new web site:

"Your site looks terrific! Very well done!"

"Your web site is beautiful!"

"I especially like the 'sea-glass' look."

"I visited the new library web site. It looks great."

"The new web site is colorful and informative."

"Wish to congratulate you on your excellent web site."

"I found the web site very attractive. Love the pictures!"

"You've done so much work so well!"

"I love the colors and the fact that it isn't all cluttered up with cutesy graphics."

The Library has books to help you learn about digital photography and software programs such as Adobe Photoshop and Paint Shop Pro. Here are some of the newest books you may request:

Digital Photography

778.3 Johnson
How To Do Everything With Your Digital Camera

778.3 King
Digital Photography for Dummies

Adobe Photoshop

005.75 DiNucci
Adobe Master Class

006.68 Photoshop
Adobe Photoshop Elements

006.6869 Binder
Easy Adobe Photoshop 6

Paint Shop Pro

006.68 Paint Shop
The Complete Idiot's Guide to Paint Shop Pro 7

'PHOTOGRAPHY and TECHNOLOGY' DISPLAY COMING IN JUNE

If you have a computer and a scanner or digital camera, you may already have enhanced your photographs with digital imaging software. But if you haven't taken advantage of the many photographic variations and effects that imaging software can provide, be sure to see Lynne Holton's exhibit of her computer enhanced photos which will be on display in the Rogers Room Display Case in June. The exhibit will focus on the use of filters. Lynne is an Ipswich Library circulation librarian who is also an accomplished photographer.

Lynne will show her original photographs and contrast

them with the changes she's made to the photos using digital imaging software. There are many good graphics software programs available; Adobe *Photoshop Elements*, Jasc *Paint Shop Pro*, and Ulead Systems *PhotoImpact* are just a few of the many reasonably priced programs on the market, and often one of these programs will come with the scanner or digital camera you buy. These programs allow you to make basic changes to your photos such as brightness, contrast, hue and sharpness.

They also enable you to turn a photograph into something that more resembles a

'painting.' Using 'filters' and 'effects,' the resulting image will look like a watercolor, oil, pastel, etc. These software programs are creative and fun to use, and the Ipswich Public Library has books to help you learn the programs (see sidebar).

Lynne's display is sure to be fascinating to anyone who is interested in photography and what can be done with photographs using today's technology. Don't miss it!

INTERNET FOR PARENTS

The Ipswich Public Library offers a "hands on" computer workshop for parents who want to be aware of the Children's Room Internet resources available to school-age children. The workshop emphasizes search engines and web sites that are useful to parents helping children with their homework and other school projects. Safety guidelines on cruising the World Wide Web, the use of the varied features of the online catalog such as accessing patron records and title requests, and blocking software for home computers are part of the discussion. A virtual tour of the official town web site with focus on the library homepage is also included.

For further information, or to schedule an appointment, please call the Children's Room at 978-356-6648.

